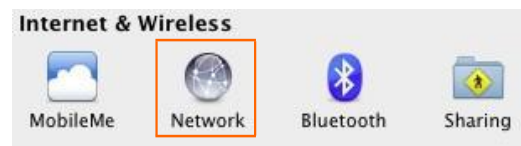


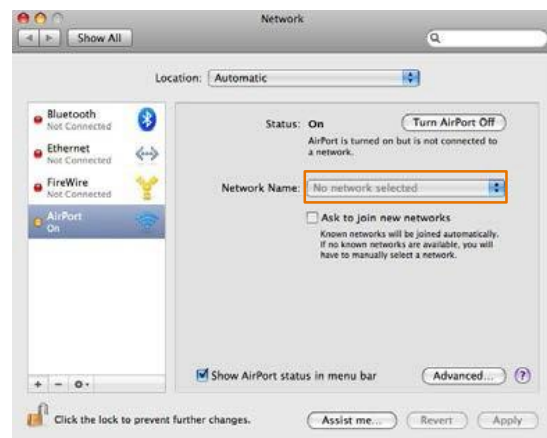
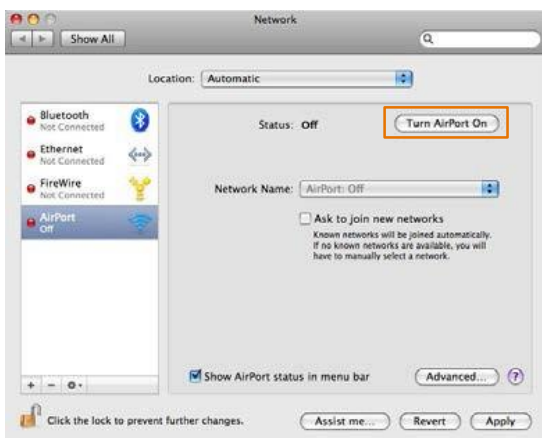
# Wireless Network Guide for Apple Macintosh OS X (All Versions)

**Step 1:** Open **System Preferences**. This can be found in the menu bar under the **Apple** icon. Under the **Internet & Wireless** section, select **Network**.



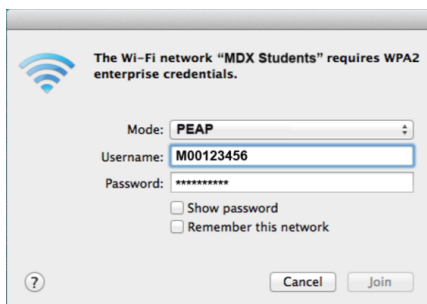
**Step 2:** Select **Airport** from the menu on the left, and click on the **Turn Airport On** button.

Once Airport is on, click on the drop-down menu next to **Network Name** and select the **MDX STUDENTS** network. You will then be prompted for a password.



**Step 3:** Please ensure you enter your Student Number (e.g. M00123456) and password details correctly. Make sure the mode is set to **PEAP**, and that the **Remember this network** box is ticked, and press **OK**.

You will then see the **Verify Certificate** message below; click on **Show Certificate** to check that the certificate originated from a valid and secure university server— [isemdx.studentmdx.ac](https://isemdx.studentmdx.ac). After verifying, click on the **Continue** button to confirm network connection.



**Step 4:** The Airport icon in the System Preferences menu will then indicate a successful connection to the **MDX STUDENTS** network. You will now have access to the internet, as well as all university resources.

