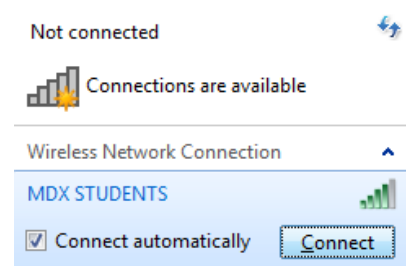
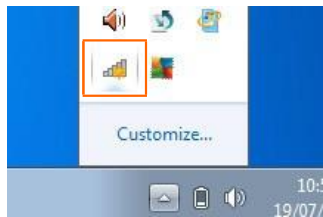


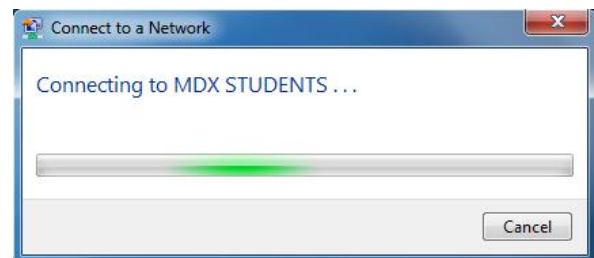
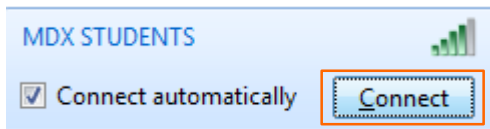
Wireless Network Guide for 32-bit & 64-bit Windows 7/Vista

Please note: Although the screenshots below show instructions for Windows 7, the same procedure will also work on laptops with Windows Vista.

Step 1: Click on the wireless icon in your taskbar; it should indicate that wireless connections are available. Select the **MDX Students** network.

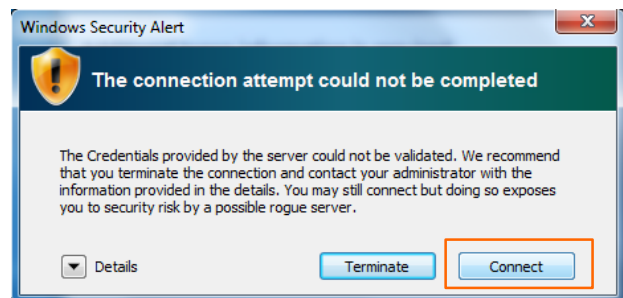
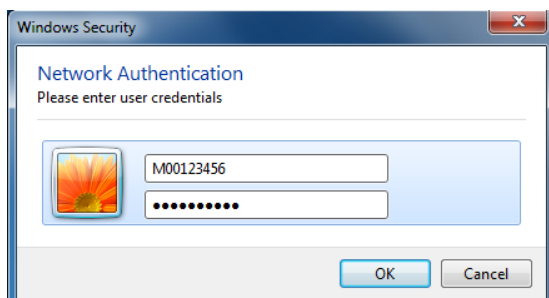


Step 2: Make sure the **Connect Automatically** box has been ticked, and then click on the **Connect** button. Your computer will then attempt to connect to the **MDX Students** network.



Step 3: After a few seconds you will be asked for your **Network Authentication** details. Please ensure you enter your PC network login ID (e.g. M00123456) and password details correctly, and click on **OK**.

You may see the **Windows Security Alert** below right; click on **Details** to check that the certificate originated from a valid and secure university server— isemdx.studentmdx.ac. After verifying, click on the **Connect** button to confirm network connection.



Step 4: The wireless icon on the taskbar will then indicate a successful connection to the **uni.mdx.ac.uk** network. You will now have access to the internet, as well as all university resources.

