



**Middlesex
University
Dubai**

**PRINT GUIDE
(Computer Labs)**

Step 1: Login to the Lab PC with the MISIS Number (Student Number) and WIFI Password.

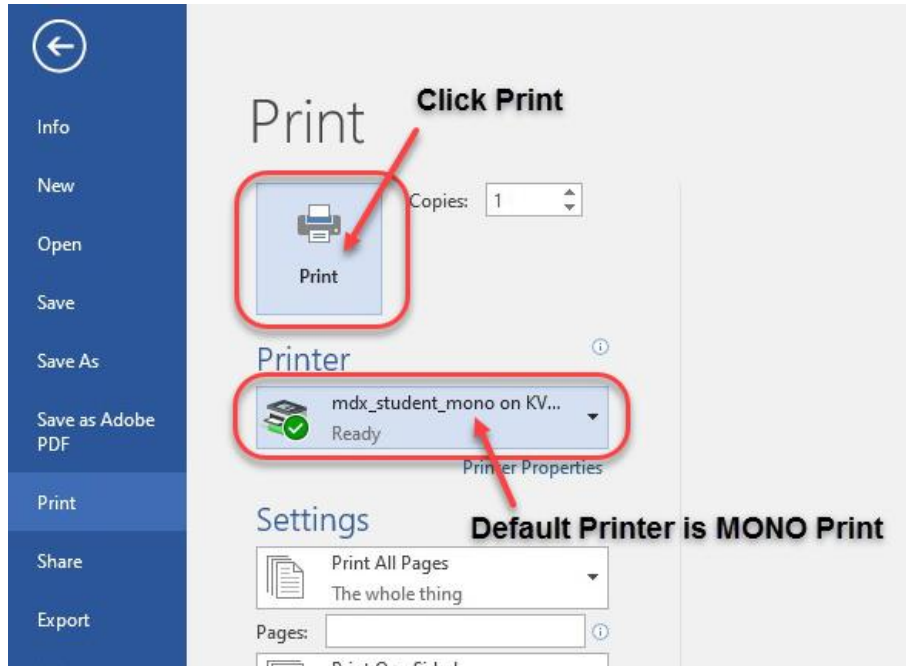
Username : M00xxxxxx

Password : <PC/WIFI Password>

Please note if you don't remember your PC/WIFI Password, then you can refer to the PC/WIFI Password Reset Guide sent to you earlier from helpdesk@mdx.ac.ae

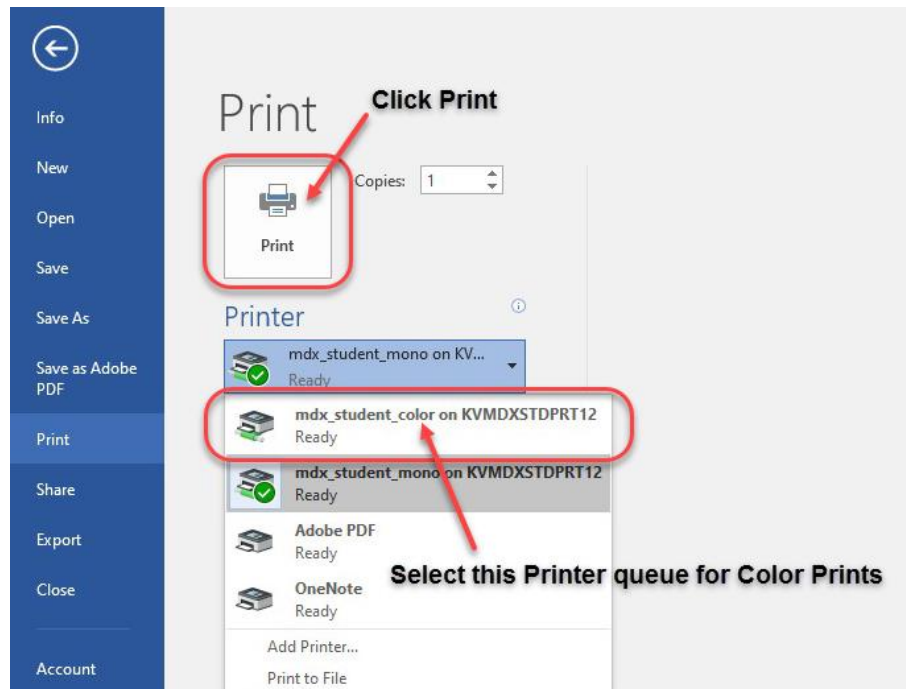
Step 2: Open your document which you want to print and give the print command.

It will show you the print window as below:



By Default, the Printer is set to Print MONO i.e. Black & White

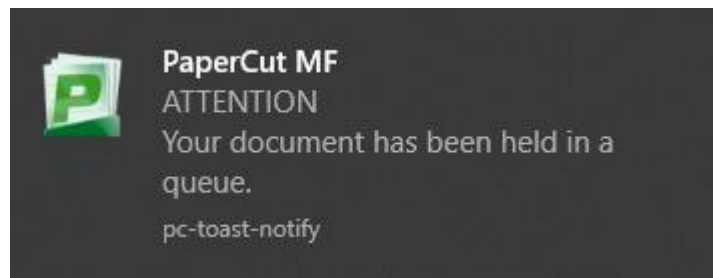
If you want to print the color, please select the Print queue (**mdx_student_color**) for color prints as shown below:



After the selection please:

Click→Print

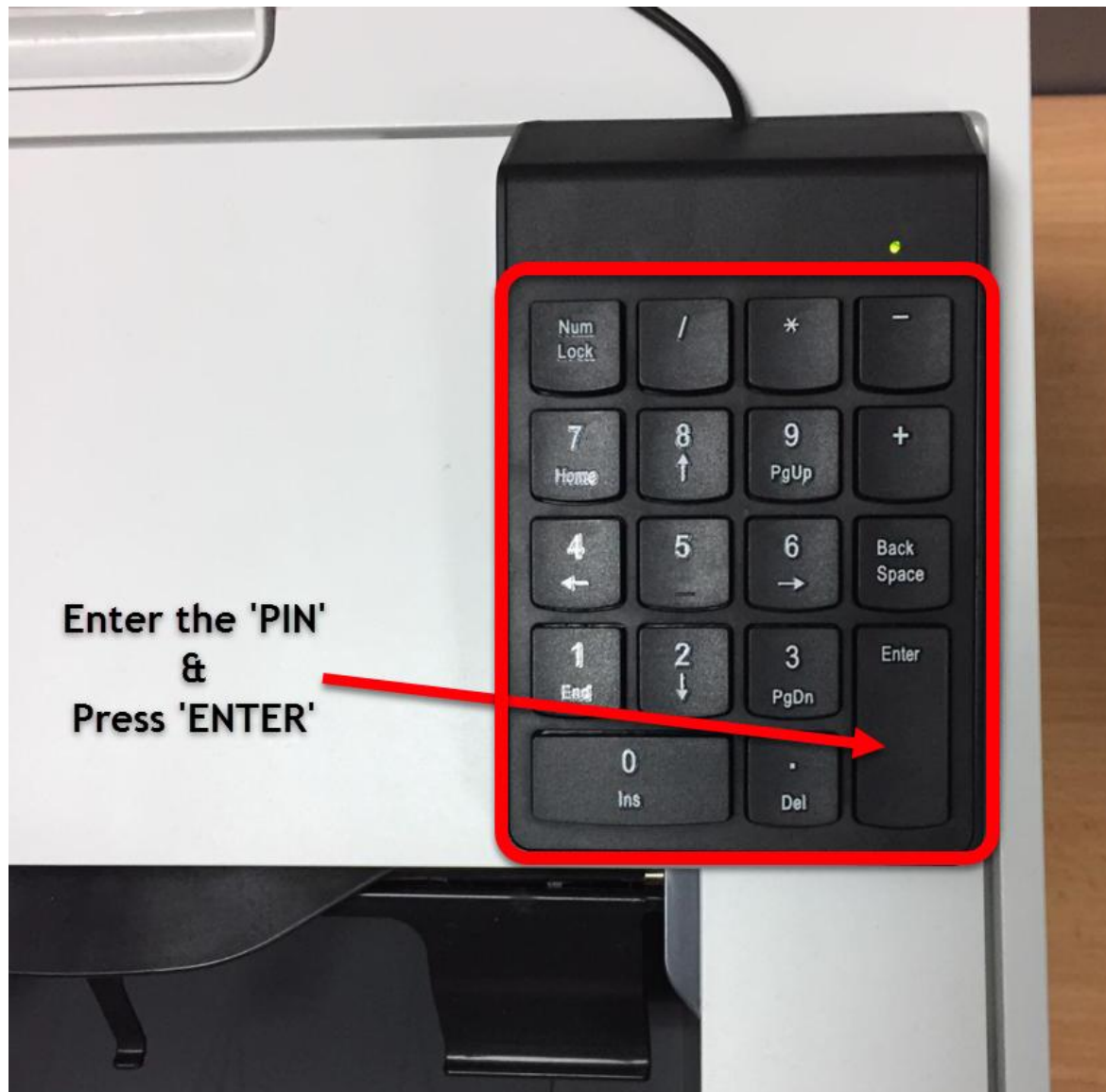
Step 3: It will show the following pop up window in the bottom-right corner as below:



Step 4: Please go to [any Printer in any Lab](#) and you will find a [Keypad](#) on top of the printer as shown below:



Step 5: Enter the PIN & Press 'ENTER' on the keypad shown below.



Please note: PIN is a 4-digit code which was sent to your University Email from MDX Printer <mdxprinter@mdx.ac.ae>

Now the Printer will print the document successfully.